

## DM-1204 Series

### Features:

- . PBT Housing
- . Detecting Distance: 3~6 mm
- . DC 3 Wire & AC 2 Wire



### Specification:

Type  Model  Item	DC 3 Wire						AC 2 Wire	
	Wire		Socket		Water Proof		-	
	Normal Open	Normal Close	Normal Open	Normal Close	Normal Open	Normal Close	Normal Open	Normal Close
NPN Output	DM-1204NO	DM-1204NC	DM-1204NO-P	DM-1204NC-P	DM-1204NO-C	DM-1204NC-C	DM-1204AO	DM-1204AC
PNP Output	DM-1204PO	DM-1204PC	DM-1204PO-P	DM-1204PC-P	DM-1204PO-C	DM-1204PC-C	-	
<b>Max Detecting Distance</b>	4 mm ± 10%							
<b>Setting Detecting Distance</b>	0 - 3.2 mm							
<b>Standard Object</b>	Iron 12 × 12 × 1t							
<b>Hysteresis</b>	15% of Setting Detecting							
<b>Accuracy</b>	± 10%							
<b>Loop Protection</b>	Reverse Protection Loop						-	
<b>Power Supply</b>	10-30V DC						AC 24 ~240V	
<b>Load Current</b>	200mA Max.						5 ~250 mA	
<b>Response Frequency</b>	600Hz						30Hz	
<b>Indication</b>	RED LED							
<b>Protection</b>	IP 67							
<b>Vibration</b>	10-55 Hz ; 1.5mm X,Y,Z continuous 2 hours							
<b>Shock</b>	500 m/S (50g) X, Y, Z continuous 3 times							
<b>Operating Temperature</b>	-25 to 70 ; Storage Temperature: -30 to 80							
<b>Operating Humidity</b>	35 to 85 % RH							
<b>Housing Material</b>	PBT resin + 30% fibre							
<b>Wiring Material</b>	PVC		3C/ 3.8 Ø * 2M		Plug : 4 pins		2C/ 3.8 Ø * 2M	
<b>Weight</b>	54g		64g		14g		49g	

Order Information:

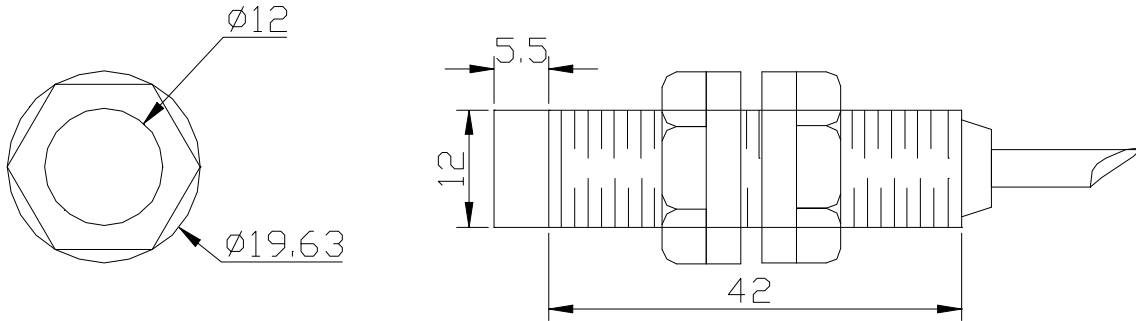
DM-12 04 X NO - X

1 2 3 4

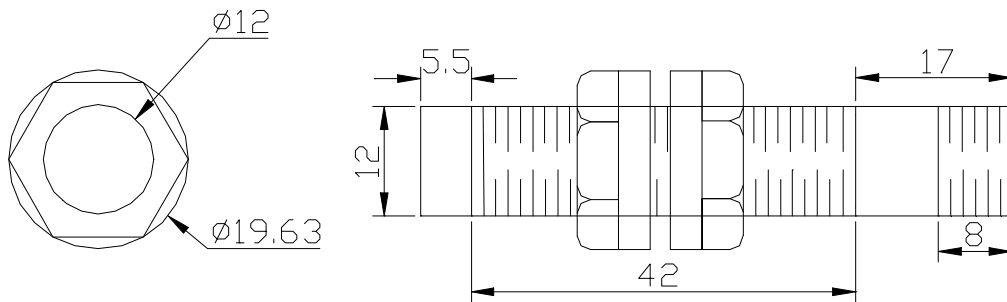
- |                                                     |                           |
|-----------------------------------------------------|---------------------------|
| 1. Detecting Distance: 3 ~ 6 mm                     | 4. Other: P : Socket      |
| 2. Output : NONE: Current Output (Standard); R: Vol | C: Water Proof            |
| 3. Output: Normal Open: NPN (NO) or PNP (PO)        | 3M: Wire 3M (5M: Wire 5M) |
| Normal Close: NPN (NC) or PNP(PC)                   |                           |
| AC 2 Wire: Normal Open (AO) or Normal Close (AC)    |                           |

## DM-1204 Series

### Dimensions:



### DM-1204 Wire



### DM-1204 Water Proof