

DM-1202 Series

Features:

- . PBT Housing
- . Detecting Distance: 2~3 mm
- . DC 3 Wire & AC 2 Wire



Specification:

Type Model Item	DC 3 Wire						AC 2 Wire	
	Wire		Socket		Water Proof		-	
	Normal Open	Normal Close	Normal Open	Normal Close	Normal Open	Normal Close	Normal Open	Normal Close
NPN Output	DM-1202NO	DM-1202NC	DM-1202NO-P	DM-1202NC-P	DM-1202NO-C	DM-1202NC-C	DM-1202AO	DM-1202AC
PNP Output	DM-1202PO	DM-1202PC	DM-1202PO-P	DM-1202PC-P	DM-1202PO-C	DM-1202PC-C	-	
Max Detecting Distance	2 mm ± 10%							
Setting Detecting Distance	0 - 1.8 mm							
Standard Object	Iron 12 × 12 × 1t							
Hysteresis	15% of Setting Detecting							
Accuracy	± 10%							
Loop Protection	Reverse Protection Loop						-	
Power Supply	10-30V DC						AC 24 ~240V	
Load Current	200mA Max.						5 ~250 mA	
Response Frequency	1KHz						30Hz	
Indication	RED LED							
Protection	IP 67							
Vibration	10-55 Hz ; 1.5mm X,Y,Z continuous 2 hours							
Shock	500 m/S (50g) X, Y, Z continuous 3 times							
Operating Temperature	-25 to 70 ; Storage Temperature: -30 to 80							
Operating Humidity	35 to 85 % RH							
Housing Material	PBT resin + 30% fibre							
Wiring Material	PVC		3C/ 3.8 Ø * 2M		Plug : 4 pins		2C/ 3.8 Ø * 2M	
Weight	52g		62g		12g		47g	

Order Information:

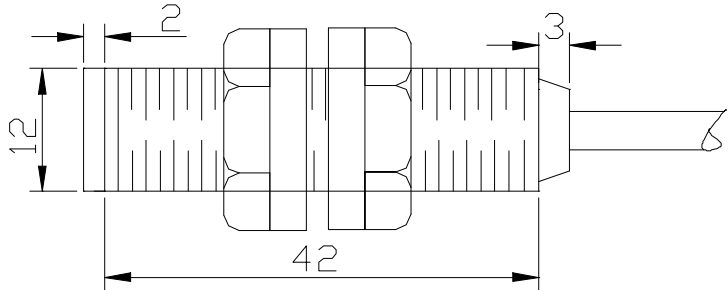
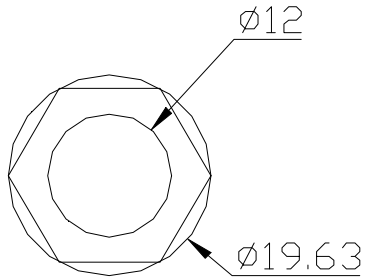
DM-12 02 X NO - X

1 2 3 4

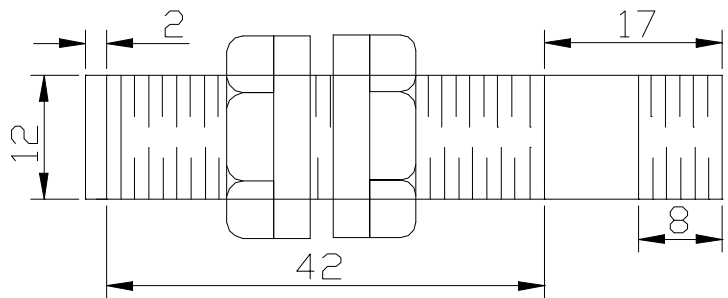
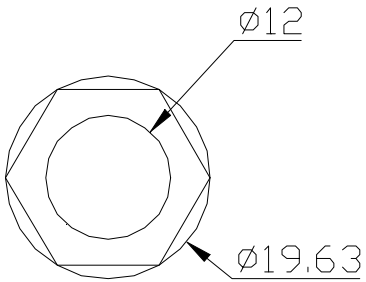
- | | |
|---|---------------------------|
| 1. Detecting Distance: 2 ~ 3 mm | 4. Other: P : Socket |
| 2. Output : NONE: Current Output (Standard); R: Vol | C: Water Proof |
| 3. Output: Normal Open: NPN (NO) or PNP (PO) | 3M: Wire 3M (5M: Wire 5M) |
| Normal Close: NPN (NC) or PNP(PC) | |
| AC 2 Wire: Normal Open (AO) or Normal Close (AC) | |

DM-1202 Series

Dimensions:



DM-1202 Wire



DM-1202 Water Proof